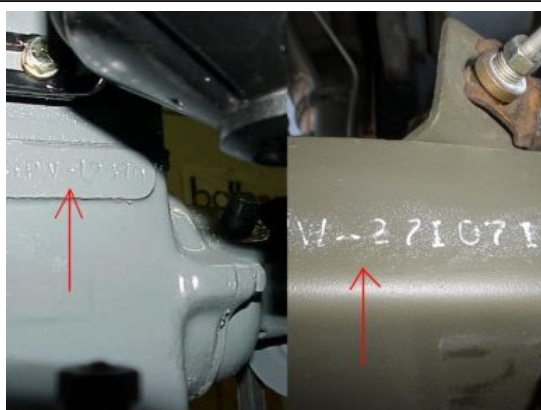


G503 WWII 1944 Ford GPW Jeep Finding your Body number

This article helps you find your 1944 WWII Ford GPW Jeep Body serial number



Your WWII jeep serial number is an important part of finding the history behind your jeep. Each WWII jeep was assigned an individual serial number. On Fords, the body serial number was stamped on the tub/body driver side cowl. Open the hood, and look down towards the frame by the body, you will see the markings there.



Are there other serial numbers?
Yes! Go to these links to locate your other numbers.
a-36-G503_WWII_1944_Ford_GPW_Jeep_Finding_your_Frame_number.aspx
>Frame Number
a-37-G503_WWII_1944_Ford_GPW_Jeep_Finding_your_Engine_number.aspx
>Engine Serial Number